

Prairie's Edge Development Corporation
Phase 1
 DEVELOPMENT

PLAN SHOWING PROPOSED
 SURFACE SUBDIVISION
 OF PART OF
 N.E. 1/4 SEC. 36
 S.E. 1/4 SEC. 36
 S.W. 1/4 SEC. 36
 Twp. 40, Rge. 24, W.2nd Mer.
 in
 R.M. of Three Lakes No. 400
 SASKATCHEWAN
 Scale 1 : 2000

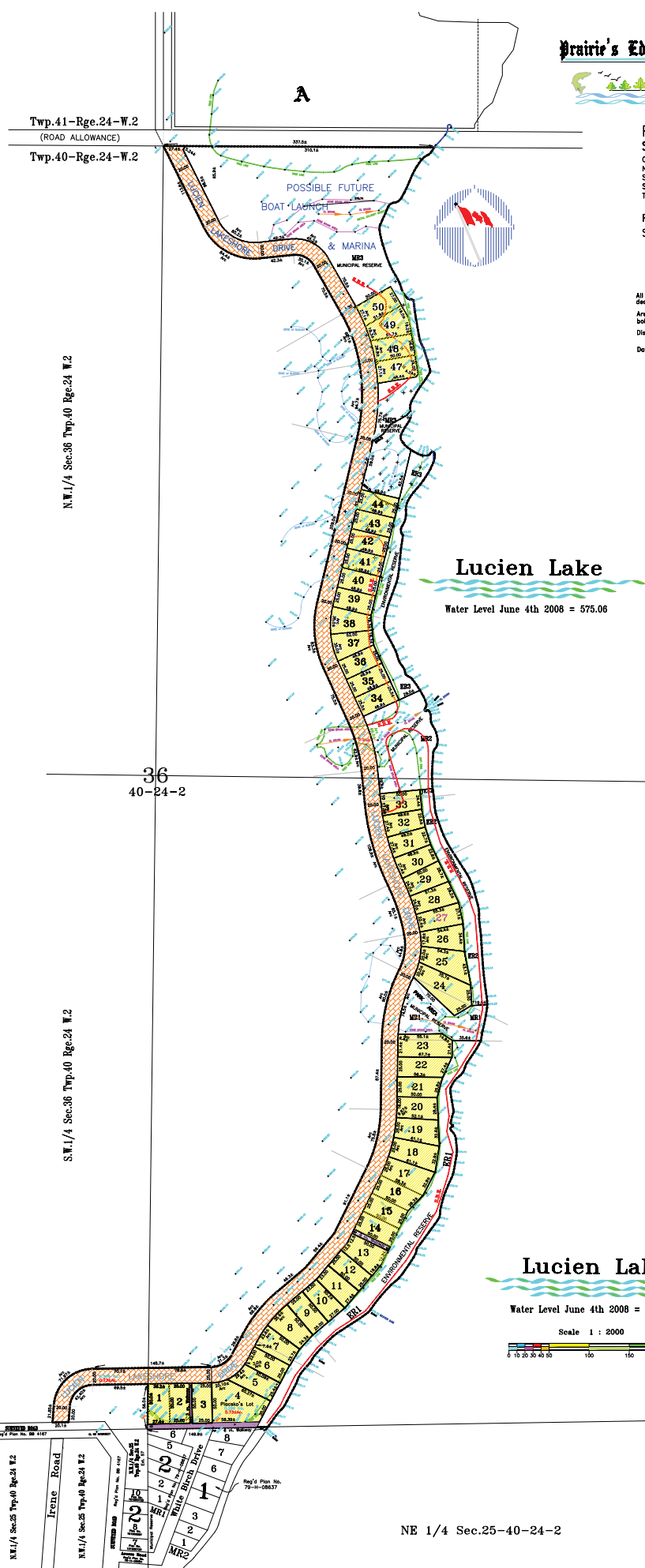
All measurements are in metres and
 decimals thereof.
 Area to be subdivided is outlined in a
 bold dashed line, and contains 217.55 ha. (543.4 Ac.)
 Distances are approximate and may vary by ±5 meters.

Date of preliminary survey:- June 4th-6th 2008
 Plan revised:- August 8th 2008
 Plan re-revised:- January 20th 2009

Scale Building Elevation - 576.70
 Mean High Water - 582.2

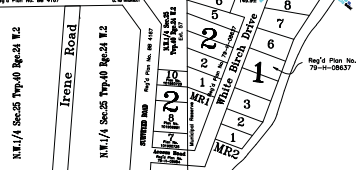
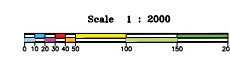
Saskatchewan Land Surveyor

Owner, Agent



Lucien Lake
 Water Level June 4th 2008 = 575.06

Lucien Lake
 Water Level June 4th 2008 = 575.06



NE 1/4 Sec.25-40-24-2